

26 November 2015

**Endeavour Energy Ref: ENL2555 – 2015/09830/001**  
**Customer Ref:**

Transelect  
 PO Box 657  
 UNANDERRA NSW 2526

**Attention: Nathan Murray**

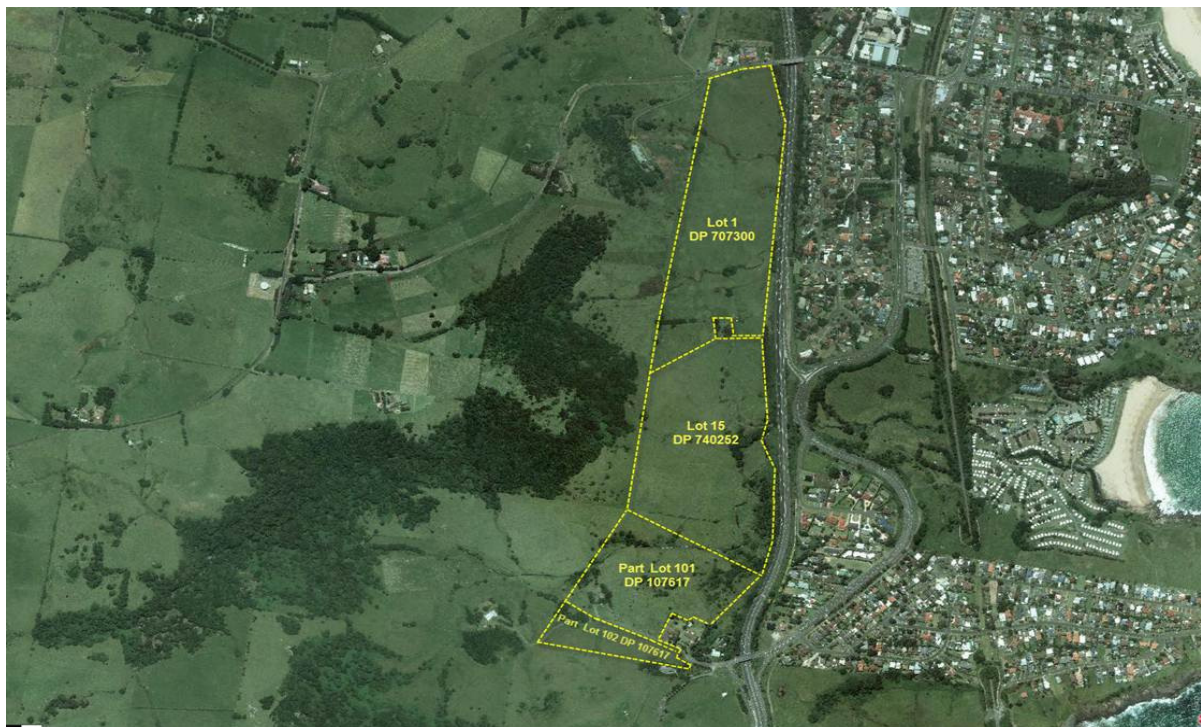
**ENL2555 – 40 Saddleback Mountain Road, KIAMA**

Dear Nathan,

Thank you for your enquiry regarding the proposed residential development at the above address. This enquiry has been registered under our reference numbers – ENL2555. Please quote this number for all future correspondence.

Endeavour Energy acknowledges that proposed development will potentially yield maximum 875 lots. Estimated load maximum demand will be 5,687.5kVA based on ADMD 6.5kVA per lot (approx. 450sq.m and non-gas area). Presently this is only supply enquiry stage and the supply required dates have not determined.

Location	Area (ha)	No of lots	Max demand kVA
Lot 1 DP 707300	16.2	250 - 300	1,950
Lot 5 DP 740252	17.5	275 - 325	2,112.5
Part 101 DP 107617 + Part Lot 102 DP 1077617	13.5	200 -250	1,625
<b>Total</b>	<b>47.2</b>	<b>875 (Max)</b>	<b>5,687.5</b>



Preliminary analysis indicates that the proposed subdivision development is located approximately 3km south of Kiama Zone Substation which would supply the development. At present there is sufficient capacity at Kiama Zone Substation but insufficient distribution (11kV) capacity to support the proposed mature load for up to 875 lots.

### Possible Supply Arrangements

At this point in time (November 2015) there is limited capacity available to supply the initial stages (approximately up to 400 lots) in the proposed greenfield development area prior to an additional new 11kV feeder being required. It should be noted that capacity cannot be reserved and the initial lots that can be supplied may be reduced. Therefore, all future firm applications will be assessed at the time the firm applications are received.



